

## JSD200

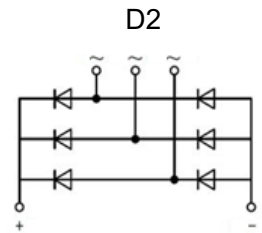
### Description

- 1) Low forward voltage and leakage current
- 2) Low inductance package
- 3) High surge current capability



### Typical Application

- 1) Field supply for DC motors
- 2) Line rectifiers for transistorized AC motor controllers
- 3) Non-controllable rectifiers for AC/DC converter



symbol

### Absolute Maximum Ratings (Packaged into D2, unless otherwise specified, T<sub>CASE</sub>=25°C)

Parameter	Test Conditions	Symbol	Values				Unit
			12	16	18	20	
Junction temperature range		T <sub>J</sub>	-40~+150				°C
Storage temperature range		T <sub>STG</sub>	-40~+125				°C
Repetitive peak reverse voltage		V <sub>RRM</sub>	1200	1600	1800	2000	V
Non-repetitive peak reverse voltage		V <sub>RSM</sub>	1300	1700	1900	2100	V
Output current	T <sub>C</sub> =95°C	I <sub>D</sub>	200				A
Forward surge current	1/2 cycle, Sine wave 50Hz, T <sub>J</sub> =25°C	I <sub>FSM</sub>	2000				A
Value for fusing		I <sup>2</sup> t	20000				A <sup>2</sup> s
RMS isolation voltage	A.C 50Hz(1s/1min)	V <sub>isol</sub>	3600/3000				V



## Three Phase Rectifier Bridge Module

**Electrical Characteristics** (Packaged into D2, unless otherwise specified,  $T_{CASE}=25^{\circ}C$ )

Parameter	Test Conditions	Symbol	Values			Unit
			Min.	Typ.	Max.	
Forward voltage	$I_F=200A, T_J=25^{\circ}C$	$V_{FM}$	-	-	1.35	V
Reverse leakage current	$V_R=V_{RRM}, T_J=25^{\circ}C$	$I_{RRM}$	-	-	0.5	mA
	$V_R=V_{RRM}, T_J=150^{\circ}C$		-	-	10	mA
Threshold voltage	$T_J=150^{\circ}C$ , for power loss calculation only	$V_{TO}$	-	-	0.85	V
Slope resistance		$r_T$	-	-	3	mΩ

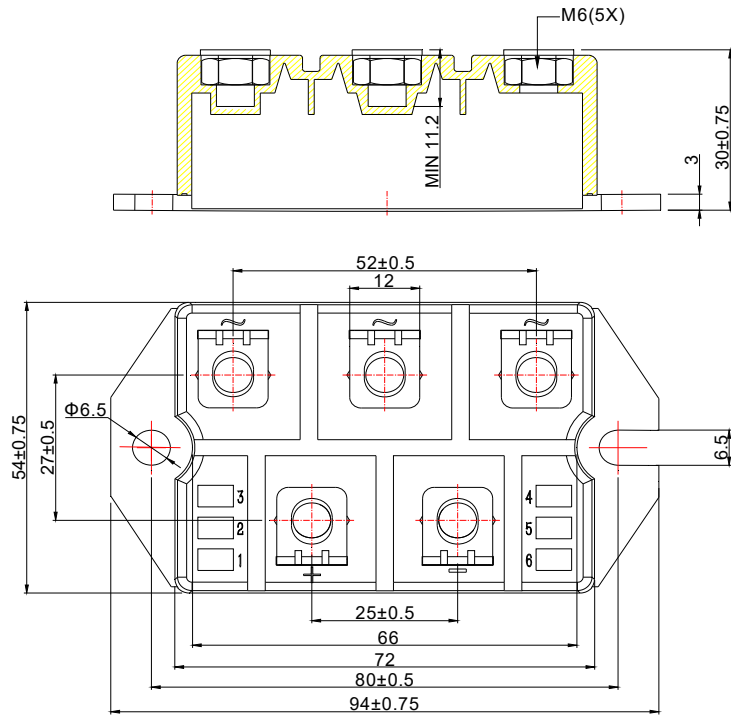
**Thermal Characteristics** (Packaged into D2, unless otherwise specified,  $T_{CASE}=25^{\circ}C$ )

Parameter	Test Conditions	Symbol	Values			Unit
			Min.	Typ.	Max.	
Thermal impedance (junction to case)	Per diode	$R_{th(j-c)}$	-	-	0.6	$^{\circ}C/W$
Mounting torque	Module and heatsink fixed torque, screw M6	M	4.25	-	5.75	Nm
	Electrode connection torque, screw M6		4.25	-	5.75	Nm
Weight			270			g
Case style			D2			

### Ordering Information

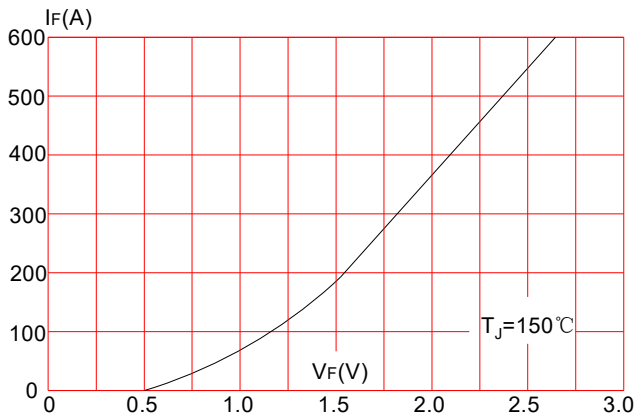
<p><b>JS</b></p> <p>JieJie Semiconductor Co., Ltd</p>	<p><b>D</b></p> <p>Diode module</p>	<p><b>200</b></p> <p><math>I_D=200A</math></p>	<p><b>/18</b></p> <p>12: <math>V_{RSM} \geq 1300V</math>            16: <math>V_{RSM} \geq 1700V</math>            18: <math>V_{RSM} \geq 1900V</math>            20: <math>V_{RSM} \geq 2100V</math></p>
---	-------------------------------------	--	---

## Mechanical Characteristics(mm)

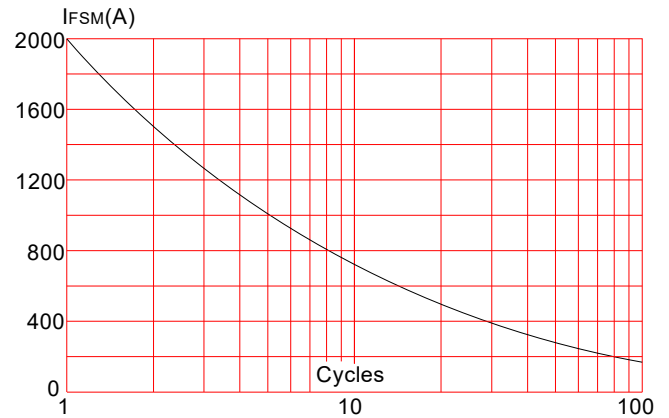


## Performance Curves

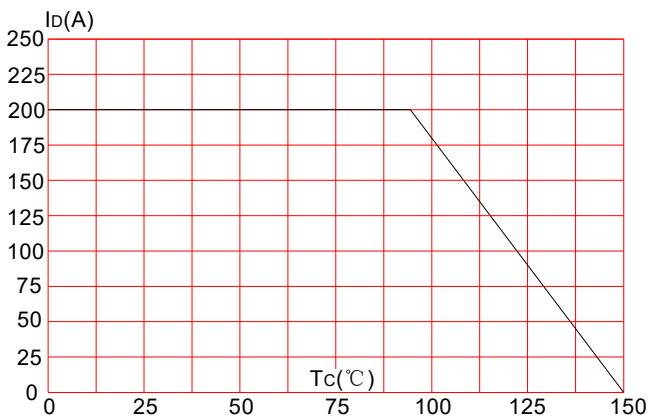
**FIG.1: Forward characteristics(per diode)**



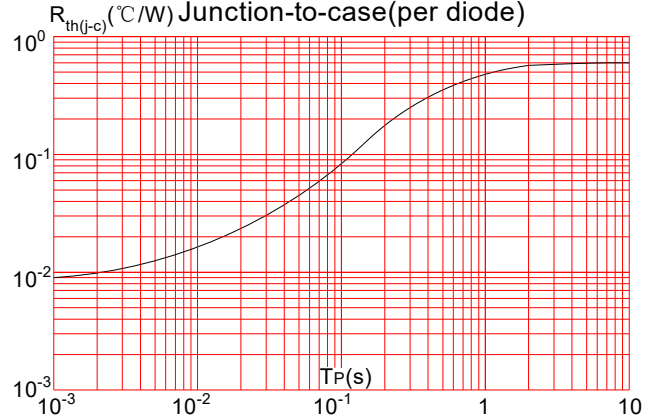
**FIG.2: Peak on-state surge current**



**FIG.3: Forward current vs. case temperature**



**FIG.4: Maximum transient thermal impedance**






## Three Phase Rectifier Bridge Module

Information furnished in this document is believed to be accurate and reliable. However, JieJie Semiconductor Co., Ltd. assumes no responsibility for the consequences of use without consideration for such information nor use beyond it.

Information mentioned in this document is subject to change without notice, apart from that when an agreement is signed, JieJie complies with the agreement.

Products and information provided in this document have no infringement of patents. JieJie assumes no responsibility for any infringement of other rights of third parties which may result from the use of such products and information.

This document is the second version which is made in 1-July-2024. This document supersedes and replaces all information previously supplied.

 is registered trademarks of JieJie Semiconductor Co., Ltd. Copyright©2024 Semiconductor Co., Ltd. Printed All rights reserved.